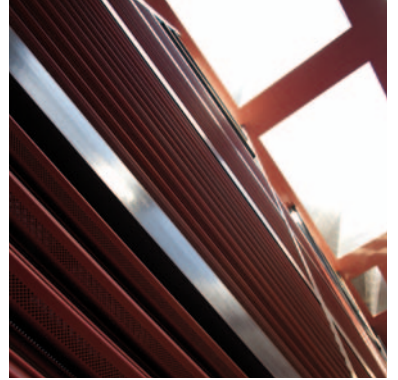
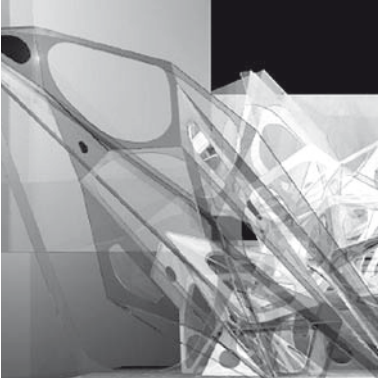
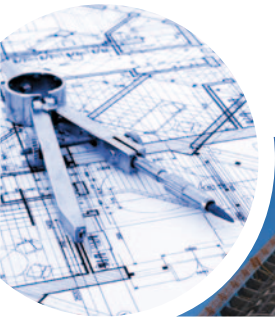


Master in Architectural Management and Design



“Bridging the gap between advanced design and business management in the architecture field...”

Faculty Profile



The Architect's Backstage guest speakers:

Person	Company	Website
Peter Oborn	AEDAS	www.aedas.com
Jason Pomeroy	Broadway Malyan	www.broadwaymalyan.com
Andrew Phillips	David Chipperfield Architects	www.davidchipperfield.co.uk
Richard Mateu	Foster and Partners	www.fosterandpartners.com
Duncan Swinhoe	GENSLER	www.gensler.com
Kristine K. Fallon	Kristine Fallon Associates Inc.	www.kfa-inc.com
Victor Van der Chijs	OMA	www.oma.eu
Paul Davis	Paul Davis + Partners	www.pauldavisandpartners.com
Robert Greenwood	Snøhetta	www.snoarc.no
Ted Strand	Solomon Cordwell Buenz (SCB)	www.scb.com
Ross Wimer	SOM	www.som.com
Manon Janssens	Zaha Hadid	www.zaha-hadid.com



Allard, Gayle

Ph.D. in Economics, University of California at Davis (US). Professor of Economic Environment, IE Business School. At a time when European unemployment rates are soaring, particularly in countries such as France and Germany, Gayle's research on the effects of welfare-state policies on employment and unemployment is of particular relevance. Her most recent areas of focus include matters of how the welfare state affects productivity as well as jobs, and what effect immigration flows have on the labor market. She has developed an indicator for employment-protection legislation that covers all of the OECD countries since 1950, and a new indicator for the generosity of unemployment benefits, called the net reservation wage, for the same countries and period. "It's fascinating to see how implementing and even just administering these policies differently, gives rise to very different results," she says. "I'm also doing a lot of research and data mining on immigration because, with an ageing population and a declining native population, this is becoming a real challenge for Europe." And as with this research, her teaching of economic environment and international economics is always in reference to what is happening in the real world. "I try to touch on everything that's relevant to business," she says. "I give real life examples constantly and I'm always bringing up comparative data, different models and different approaches".

Altamira, Ricardo

Dr. Ricardo Altamira Vega enjoys multiculturalism in all aspects of his professional and personal life: having worked as an IBM expat in 5 countries forging strategic alliances / lecturing in 4 languages and collaborating in a non-profit sports promotion pan-European organization. His activity as IE Venture Lab Tutor since 1999, has given him the opportunity to guide 20 start-up projects and also to participate in the Board of various companies in the Sports and Fitness sectors. Ricardo considers himself as an "e-learning fan", as a result of spending 5 years at IE creating on-line contents, directing and teaching on-line programs. He believes that on-line/blended education is the key for the continuing education in the Knowledge Society.

Barron, Neil

He is an industrial designer with a degree and background in Aeronautics and Astronautics (Rolls-Royce) and 20 years of experience. Neil has an MA in Industrial Design and a research degree (MPhil) from the Royal College of Art. As founder of design studio Gusto, Neil promotes 'responsible creative thinking' - working with diverse clients including Boots, E.ON, Intel, Lego, The Body Shop and Unilever. Recently his design for an iconic recycled glass water carafe won the London on Tap competition. The initiative encourages the drinking of tap water in the capital and the initial run is 20,000 units (British manufacture) with proceeds going to Water Aid. In addition to running Gusto, Neil is a Royal Academy of Engineering Visiting Professor in Innovation at Queen Mary University, London as well as part time Senior Tutor at The Royal College of Art Innovation Design Engineering department with Imperial College, London.

Blasby, Jon

Jon's career started at Davis Langdon, one of the largest Project and Cost Management Consultancies in the world. He steadily progressed in the firm becoming, at the age of 29, the youngest UK Partner at the time. During this time he developed his Quantity Surveying skills into the provision of Project Management services. Specific responsibility included liaison between the firm's UK and Spanish offices and overall responsibility for all projects in Spain with either UK based clients or consultants.

He was also Joint Chairman of the working group responsible for achieving 'Investors in People', the first surveying practice to obtain the award. Jon is a trained Value and Risk Management Facilitator and has provided this service at various levels, from business risk level down to project specific exercises.

Epps, Gregory

Gregory is the inventor of the RoboFold technology. Through a strong sense of material characteristics and a broad understanding of how things get made, both industrially and by hand, Gregory has designed a new robotic system to manufacture sheet metal directly from data in generative design software, and in doing so set in motion a trend for robotics in architecture. Gregory has presented and held workshops at numerous international conferences and events including Smart Geometry, Advances in Architectural Geometry and Autodesk University.

Fanger, Rebecca

With over 20 years experience working with senior executives from multinational organizations in Europe, the United States, Latin America, Asia and Africa in the telecommunications, IT, banking, manufacturing, engineering, pharmaceutical, construction, insurance and consumer goods sectors, she has been one of the pioneers in coaching senior management levels in Spain since 1992.

Based in Madrid, Rebecca provides consultant work linking business strategy and executive development. She specializes in attaining measurably proven improved leadership behaviors that impact professional and organizational performance.

She is currently an Associate Coach and Leadership Facilitator for the Center for Creative Leadership based in Brussels, Associate Coach and Leadership Facilitator for Mannaz based in Denmark and Associate Professor at the Instituto de Empresa business school in the Human Resources area.

She holds a B.B.A. in Marketing from the University of Puerto Rico and an Executive Master from the Instituto de Directivos de Empresa Spain-Chile, and is fluent in both English and Spanish.

Fritz, Mark

Mark is the Managing Director of Procedor, an international consulting Effectiveness.

He is an expert in Virtual Leadership (Leading People at a Distance) and is Associate Professor of Coaching, Evaluation, Feedback & Development at IE, as well as a visiting professor in leading business schools across Europe. Mark brings the experience of an International Business career with Eastman Kodak Company to his teaching, having lived and worked in several countries across the world (in the USA, Singapore, Egypt, Italy, Netherlands, Japan and the UK).

Giancane, Paolo

Corporate Finance professor at IE Business School.

He is the former Deputy General Manager of UniCredit's corporate finance team in Beijing and Hong Kong from 2005 through 2009. Prior to joining UniCredit in 2002, Mr. Giancane worked at Lehman Brothers in Milan, London and New York in the corporate finance and leveraged finance groups. Mr. Giancane holds a BA Degree from Università L. Bocconi in Milan and an MSc in Finance from London Business School.

Herreros, Juan

Juan Herreros is a Senior Professor and Director of the Thesis Program at the Madrid School of Architecture, as well as a Visiting Professor at Columbia University in New York. He has previously taught at EPFL in Lausanne, Architectural Association in London, SOA at Princeton and ITT in Chicago. In 1984, he founded, together with Iñaki Abalos, the office Abalos&Herreros. Together they would write books including *Le Corbusier: Rascacielos, Áreas de Impunidad, Reciclando Madrid, Tower and Office*, as well as *Grand Tour*. In 2006 he founded his current office, *Herreros Arquitectos* through which he pursues his professional, teaching and pedagogical activity. His recent work has been published by the architect's council of Tarragona (AT#18) and *Summa* magazine of Buenos Aires. *Herreros Arquitectos* is currently working on projects in Spain, Norway, USA, Panamá, Mexico and Uruguay. Juan has received the International Fellowship of the RIBA (Royal Institute of British Architects), the Medal of Fine Arts from the city of San Lorenzo de El Escorial and has been nominated for the 2010 Medal from the American Academy of Arts and Letters.

Jones, Garrick

Garrick is an academic, businessman and musician based in London. He is a Fellow at the London School of Economics, a Senior Tutor at the Royal College of Art (RCA-IDE) and the senior Partner of the Ludic Group LLP. His research is in the Creative Economy, Decision making and in particular role of Design and the Cultural sector in instrumentalising Policies for the Creative Sector, the Regeneration of Regions and Entrepreneurship. He is interested in the role of Design as a means to generate new economies. His music has been performed in New York at MOMA, the New Museum, Zurich Kunsthalle, Camdem Art Centre, and the Barbican.

Lago-Novás, Juan

Director Master in Architectural Management and Design.

Barch, Escuela Superior de Arte y Arquitectura de Madrid (ES). MBA Escuela Politécnica de Madrid (ES), LPSF Harvard Business School (USA)

Professor Lago-Novás is PhD candidate at the ESAYA University of Madrid. His Research Proficiency is about architecture practices management and the implications of business decisions in their design strategy. In 2002 Juan founded DSC Architecture, a research office for innovation in architecture where he acts as Principal, combining his time with his position as Vice Chairman of the Juan de la Cosa Foundation, an organization that helps promote Spanish architecture internationally. He has worked on a number of projects across the globe in countries such as Argentina, Rumania, Brazil, Venezuela, Switzerland, and Panama, among others. Juan is also lecturer and visiting critic in various international universities.

Keech, David

He is a visiting tutor in IDE and is managing director of British design consultancy, Keechdesign. He graduated from the RCA in 1989 after studying under, and later working for, Sir Eduardo Paolozzi in the Ceramics & Glass Department. He then worked as a designer for leading architects Foster + Partners in London from 1990 to 2002, becoming an Associate and working on numerous international projects. In 2003 David moved to Japan, strategically hired into Yamaha's design headquarters at Hamamatsu as the first non-Japanese designer to join its creative team. Upon his return to the UK in 2005, David founded Keechdesign, the concept of which has grown out of a passion for both environment and product design, and a desire to unify experiences and knowledge gained at the cutting edge of both British architecture and Japanese consumer goods.

Kock, Carl

Whether it is how to encourage managers to act on climate change in their industry or the extent to which the financial markets drive companies to implement strategic change, Carl Joachim Kock is fascinated by cause and effect.

His work focuses on identifying the fundamental drivers of value in companies as a whole, combining a traditional research stream on the governance of large firms with a focus on Corporate Environmental Management.

Prof. Kock's also research shows that while firms may indeed perform better financially when they take care of the environment, shareholders may not always be aware of that and it is then up to managers to implement the necessary strategies – this, however, requires the implementation of rather specific types of governance mechanisms.

Prof. Kock encourages students too to look at what they're being taught with fresh eyes. "It's crucial to understand a few things about the game that's being played," he says. "And to do that you need to look at causal processes, the evolution of the what and the why."

Maguire, Laura

Laura Maguire has been dedicated to teaching since she started her professional and academic career, first at the Universidad Autónoma in Madrid and now at IE Business School. Her commitment to academia is recognized due to the number of publications, papers, both authored and co-authored, and her participation as plenary speaker in a number of seminars. She completed her studies at Glasgow University, and later on, at the University College of London (UCL).

Martín de Holan, Pablo

Chairman of the Entrepreneurial Management Department and professor of Strategy at IE Business School. Adjunct Professor at MIT's Master in Supply Chain Management in Zaragoza, Spain. Former Bombardier Chair of Entrepreneurship at the University of Alberta, Canada, visiting professor at HHL (School of Business) in Leipzig, Germany, and UTDT in Buenos Aires, Argentina, among others. From 1993 to 1998 he taught at McGill University in Montreal, Canada, where he won the Royal Bank of Canada Teaching Innovation Award, two consecutive years. Since the beginning of his academic career, Pablo has taught in over 20 countries in three languages. In 2009, he won two IE Teaching Excellence Awards.

Mayoral, Daniel

Associate professor on the Human Resources Area at IE. Master in Business in IE Business School and Bachelor in Sciences from Universidad Complutense de Madrid. He focuses in all aspects related to organizational and personal development including creating training plans, development of training courses, competencies evaluation, mentoring/coaching programs, change management and on-line tools development, among others. He has spent several years working in numerous consultancy projects at Accenture. He was formerly in charge of the Development Area in Agilent Technologies. He currently runs his own firm which focuses on training and helping individuals and organizations with development programs.

Méndez, Marisa

Associate Professor at IE since 2002, specializing in professional services firms management issues. After leading the regional marketing function of a global law firm, she now assists professional service firms in adopting and executing effective business development strategies. She is a regular commentator and speaker on business development issues and author of a book on Social Marketing and co-author of the first book on legal marketing published in Spain. She has followed programs at the University of Navarra, University of Ramon Llull, ESIC and Harvard Business School.

Molinos, Roberto

Architect Roberto Molinos graduated with honours from Escuela Técnica Superior de Arquitectura in Barcelona and holds a Master of Advanced Studies in Structural Design from Escuela Técnica Superior de Arquitectura, Technical University Madrid.

He has conducted undergraduate research with Rafael Escolá Foundation and POLE Europe scholarships, developing essays on applied use of information technologies in multidisciplinary projects.

Currently, he combines part time teaching at IE University with his work at OSOME, an advanced geometry and BIM consulting firm founded by himself. Roberto is also one of the promoters of Algomad, a workshop that seeks to spread the use of computational tools in architectural design.

Murray, Peter

Chairman of Wordsearch, a branding and communications company in the architecture and real estate areas. He was formerly technical editor of Architectural Design (AD) and, subsequently Editor of the weekly newspaper Building Design. He then moved to be Editor and Publisher of the RIBA Journal. In 1983 he started Blueprint Magazine, the first of the new wave of design and architecture magazines. He has been curator to a number of major architectural exhibitions, including New Architecture - the work of Foster Rogers Stirling at the Royal Academy, and Living Bridges at the Royal Academy in 1996. He is the founder and Exhibitions Director of New London Architecture (NLA), Founder/Director of the London Festival of Architecture and editor in chief of London Property Review magazine. He is author of various architectural books including Contemporary British Architects, New Urban Environments, Living Bridges, The Saga of Sydney Opera House and Architecture and Commerce. He is deputy chairman and honorary secretary of the Bedford Park Society and was made an Honorary Fellow of the Royal Institute of British Architects in 2000.

Piker, Daniel

He is the creator of the physics plug-in Kangaroo, and an independent researcher into geometry and computational design. Favouring an open and collaborative approach, he shares much of this work and code online and engages in constant discussion with designers and researchers worldwide. He co-teaches studios at the AA-DRL and Chelsea College of Art, as well as delivering software training to architecture and engineering firms, and consulting for numerous high profile practices. He has presented his work internationally, including at the Conference on the Future of Engineering Software in Arizona, and has taught several workshops on parametric design including the BioDynamic Structures summer school in San Francisco.

Pla Catalá, Anna

Anna graduated at the Architectural Association School of Architecture in London (AADipl), and holds a Master of Science in Advanced Architectural Design from the Graduate School of Architecture, Planning and Preservation (GSAPP) from Columbia University of New York (MsAAD '01). She worked at Foster and Partners in London and Eisenman Architects in New York before setting her own private practice in Barcelona, focused on the higher integration between advanced digital technologies and everyday architectural production. She is Director of Digital Studies at the IE School of Architecture and Design, she has taught design studios and theory seminars at the University of Pennsylvania, Berlage Insitute, IAAC, ESARQ-UIC, Elisava Graduate School of Design, Metropolis-CCCB and the Rotterdam Academy of Architecture and Urban Design, and the Graduate School of Design at Harvard University.

Sánchez, José Miguel

José Miguel Sánchez has more than 18 years of experience as an HR executive in companies such as Monroe Europe, Coca-Cola, Kraft Foods and SHL Iberia.

His experience in these companies has given him a hands-on approach to the strategic vision of the Human Resources function.

During the past five years he has been leading a consultancy company that helps clients to implement HR projects in their companies in areas like development, training, assessment and coaching. He is a Professional Certified Coach by the International Coach Federation, and has carried out more than 1800 hours of coaching.

Susperregui Virto, Jesús M^a

Architect. Managing Director, IDOM-ACXT. His works have been awarded and holds merits from numerous professional groups and societies. He is a managing partner and member of the board of IDOM. He is also a trustee of the Rafael Escola Foundation, where he collaborates in research projects dealing with architecture and building engineering.

Thorne, Martha

Martha is the Associate Dean for External Relations of IE School of Architecture & Design, and is currently Executive Director of the Pritzker Architecture Prize, a position she holds since 2005. She has served as Associate Curator of the Department of Architecture at The Art Institute of Chicago.

She is the editor and author of several books, including The Pritzker Architecture Prize: The First Twenty Years, and author of numerous articles for architectural journals.

Thorne holds Master of City Planning degree from the University of Pennsylvania and a Bachelor of Arts degree in Urban Affairs from the State University of New York at Buffalo.

Torresi, Savina

Savina is an Architect, Senior Visiting Tutor at IDE and co-founding Partner of NOI architects. She has been teaching at IDE since 2004, has been Visiting Tutor at Kingston University School of Architecture, has been invited as external juror at the Architectural Association and at Ecole Nationale Supérieure d'Architecture de Saint-Étienne, has been engaged as team leader in a series of workshops organized by the Olympic Delivery Authority and InnovatioRCA to deliver design ideas for the 2012 Olympic Park. Savina graduated in Architecture at the Università Mediterranea di Reggio Calabria and worked for her family's architectural firm before moving to London in 2002. She worked as Project Architect and Design Consultant for several architectural and interdisciplinary firms including Foster + Partners, Richard Rogers and Partners and Zaha Hadid Architects.